

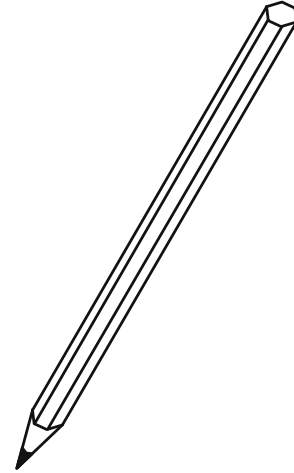


ELECTIONS BC
A non-partisan Office of the Legislature

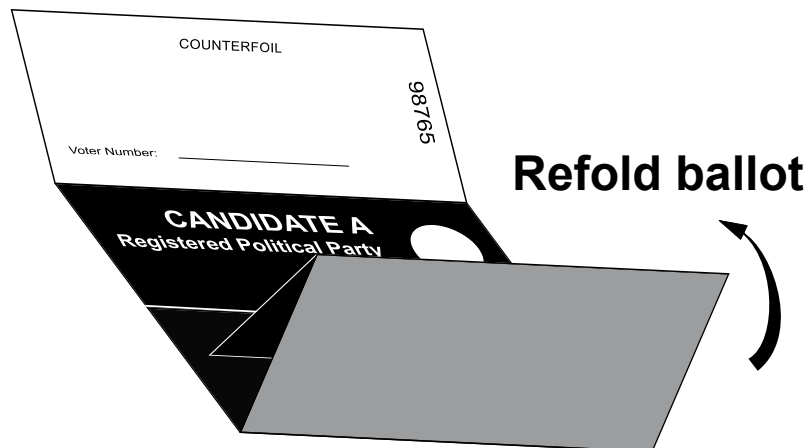
Marking the Ballot

1. Choose **one** candidate.
2. Mark an **X** or ✓ in the white circle beside that candidate.

A sample ballot form with a white top section and a black bottom section. The white section contains the text "COUNTERFOIL" and "Voter Number: _____" with a line for the number. The number "98765" is printed vertically on the right side. The black section contains four rows, each with a candidate name and a white circle for marking. The candidates are: "CANDIDATE A Registered Political Party", "CANDIDATE B", "CANDIDATE C Independent", and "CANDIDATE D Registered Political Party". A large "SAMPLE" watermark is overlaid diagonally across the form.



3.



4. Return folded ballot to election official.