

# NANAIMO NAN MAP - 5 OF 5

Creation Date: Nov/12/2008 Map ID: NAN5\_RE2008S06\_20081218  
Scale: 1:12,000 Projection: Albers Equal Area Conic Datum: NAD 83

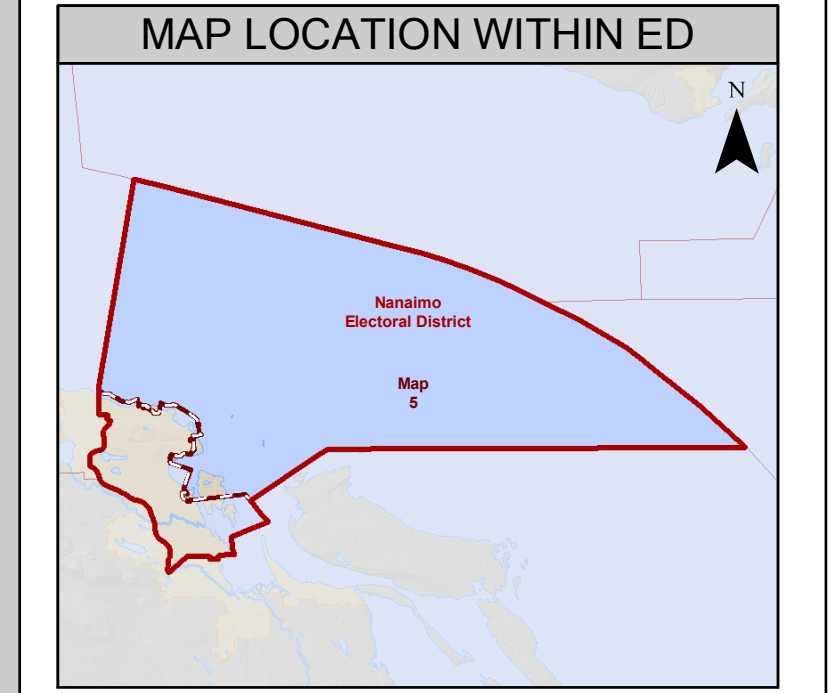
LEGEND					
	Point Voting Area		Hospital		Park
	Site-based Voting Area		School		Indian Reserve
	Administrative Boundary		Railway		Administrative Boundary
	Neighbouring ED		Highway		Neighbouring ED
	ED Boundary		Road		Watercourse
	ED Boundary		Waterbody		Greenpace
	ED Boundary		Greenpace		

### VOTING AREAS ON MAP

008  
019  
035  
057

### POINT VOTING AREAS

### SITE-BASED VOTING AREAS

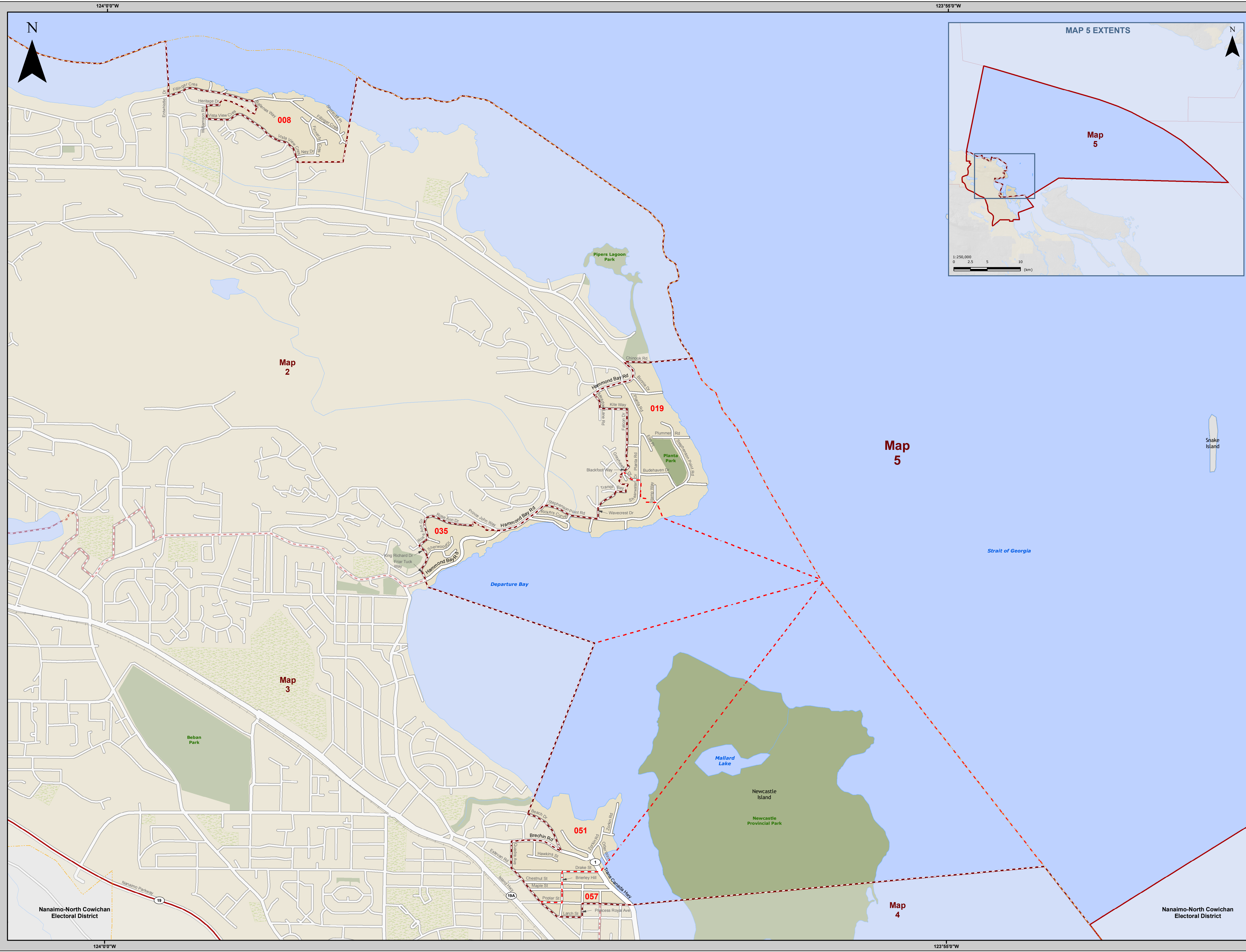


### ELECTORAL DISTRICT REDISTRIBUTION 2008 VOTING AREA REDISTRIBUTION

This map is prepared as a guide to the location of electoral boundaries and should not be used for navigational purposes. The electoral boundaries officially take effect on April 14, 2009, the day the writs are issued for the May 12, 2009 General Election. For the most current map products consult the Elections BC website.

**ELECTIONS BC**  
A non-partisan Office of the Legislature

Phone: (250) 387-5305 Fax: (250) 387-3079 Email: electionsbc@elections.bc.ca  
Toll-free: 1-800-661-8683 TTY: 1-888-456-5448 Toll-free Fax: 1-800-461-0805 Website: www.elections.bc.ca



124°0'0"W

123°55'0"W

124°0'0"W

123°55'0"W